



HER2 gastric 4-in-1 FFPE Block Reference Standard

CBPN0015

I. Description

HER2, also known as c-erbB2, is composed of 922 adenines, 1,382 cytosines, 1,346 guanines, and 880 thymines. The human gene is located on chromosome 17q21 and is a proto-oncogene. Its encoded product, HER2 protein, is a 185kD transmembrane protamine, referred to as p185, consisting of 1255 amino acids, with positions 720-987 belonging to the tyrosine kinase region. HER2 protein is a transmembrane protein with tyrosine protein kinase activity and is a member of the HER family.

II. General information

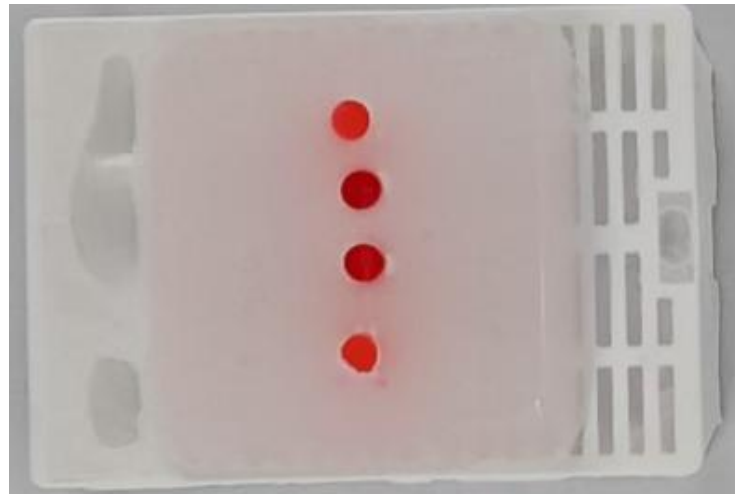
Name	HER2 gastric 4-in-1 FFPE Block Reference Standard
Cat. No.	CBPN0015
Format	FFPE Block
Size	4mm/block
Intended Use	Research Use Only
Buffer	Tris-EDTA
Storage Conditions	-25~-15°C
Expiry	36 months from the date of manufacture

III. Technical Data

Cell number Subject to actual situation

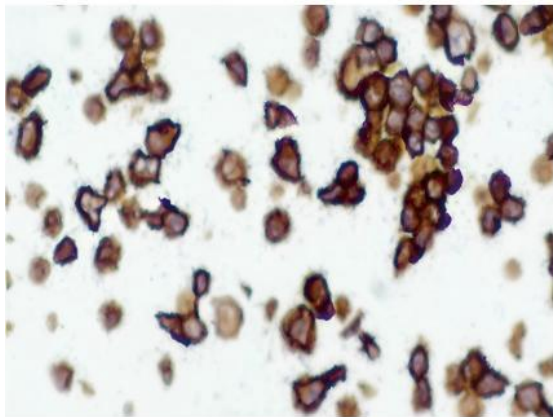
Paraffin block
thickness 4mm

Example

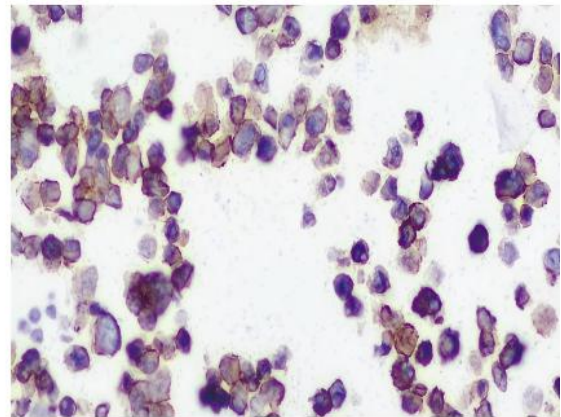


IV.IHC staining results

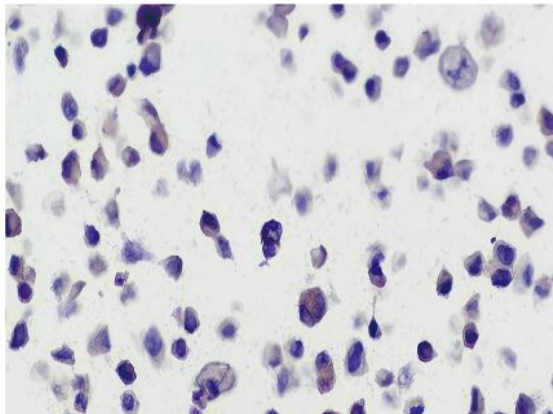
HER2(ERBB2)+++ Positive



HER2(ERBB2)++ Positive



HER2 (ERBB2)+ Positive



HER2 (ERBB2) Negative

