



CLDN18.2 4-in-1 FFPE Block Reference Standard

CBPN0013

I. Description

CLDN18.2 is a member of the Claudin protein family and is located on the cell membrane surface. The expression of Claudin18.2 (CLDN18.2) is specific. As a subtype of Claudins protein, it is only expressed in differentiated gastric mucosal epithelial cells in normal tissues. It is expressed in a variety of tumors such as gastric cancer, esophageal cancer, and pancreatic cancer, and is not limited to primary lesions, but also in metastatic lesions. The detection methods currently used in clinical studies are all immunohistochemistry.

II. General information

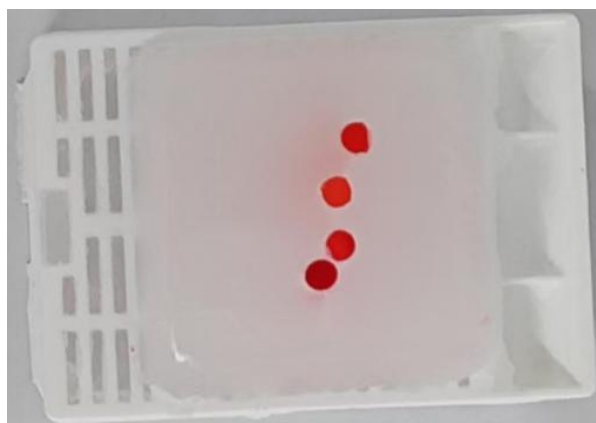
| | |
|--------------------|---|
| Name | CLDN18.2 4-in-1 FFPE Block Reference Standard |
| Cat. No. | CBPN0013 |
| Format | FFPE Block |
| Size | 4mm/block |
| Intended Use | Research Use Only |
| Buffer | Tris-EDTA |
| Storage Conditions | -25~-15°C |
| Expiry | 36 months from the date of manufacture |

III. Technical Data

Cell number Subject to actual situation

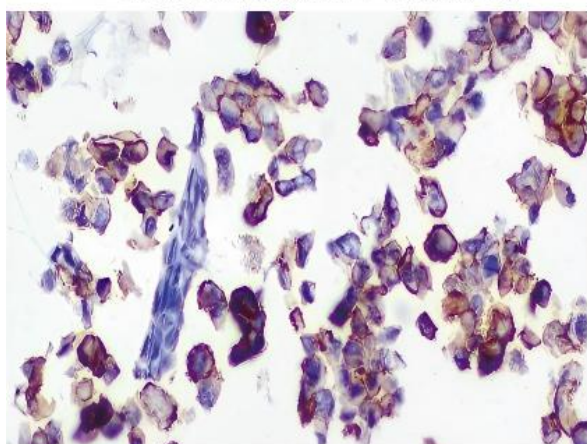
Paraffin block thickness 4mm

Example

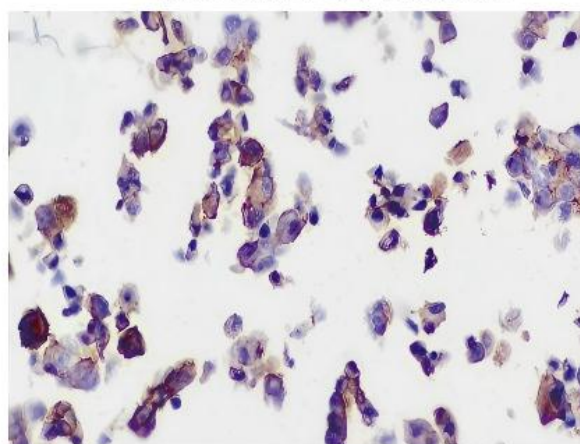


IV.IHC staining results

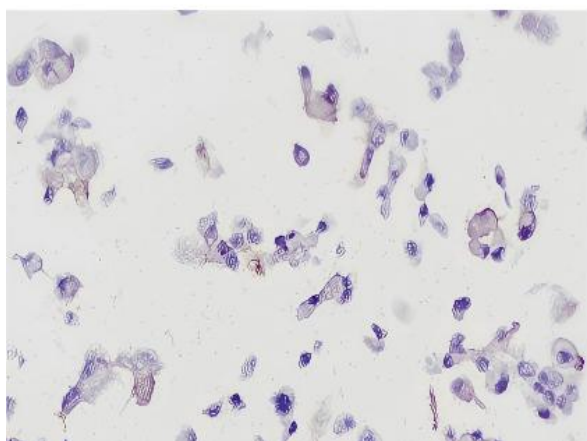
CLDN18.2+++ Positive



CLDN18.2++ Positive



CLDN18.2+ Positive



CLDN18.2 Negative

