



Lentiviral Integration Site Analysis Reference Reagent IV (Contains Sex Chromosome Insertion)

CBPL0005

I. Description

This product can be used for the safety assessment of gene editing cell therapy methods (including CART therapy). The product has been double-verified by NGS (capture method) and Sanger sequencing, indicating that it is suitable as a qualitative reference reagent for LV integration site analysis. The product can reliably detect the following 6 sites, including one sex chromosome site.

II. General information

Name	Lentiviral Integration Site Analysis Reference Reagent IV (Contains Sex Chromosome Insertion)
Cat. No.	CBPL0005
Format	Genomic DNA
Size	1ug
Storage Conditions	2~8°C
Expiry	36 months from the date of manufacture

III. Technical Data

Reference genome version: hg19

Table 1. LV Integration sites

Chromosome	Start (approx)	Gene	Integration frequency
6	74230646	EEF1A1	50%
8	145523569	HSF1	50%
9	115151304	HSDL2	50%
9	139798145	TRAF2	50%
16	47285190	ITFG1	50%
X	38435237	TSPAN7	100%

IV. Representative Data

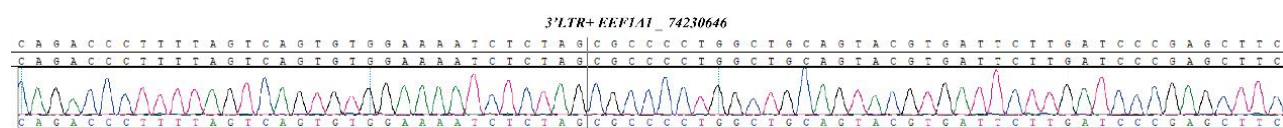


Figure 1. Sanger sequencing result of EEF1A1.

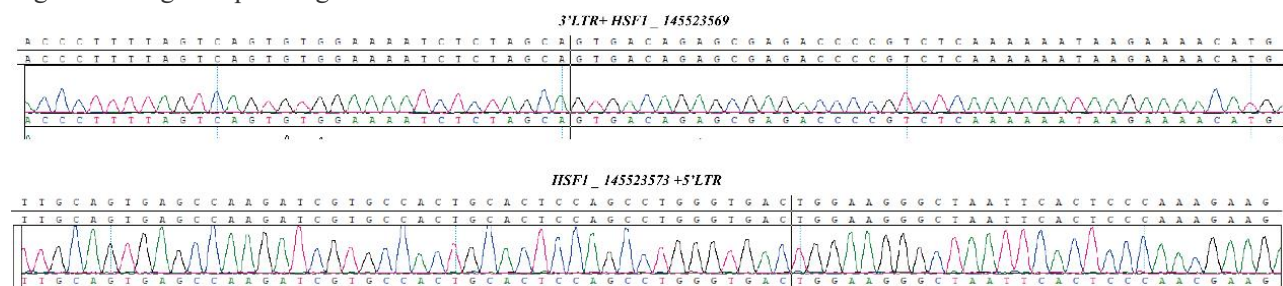


Figure 2. Sanger sequencing result of HSF1.

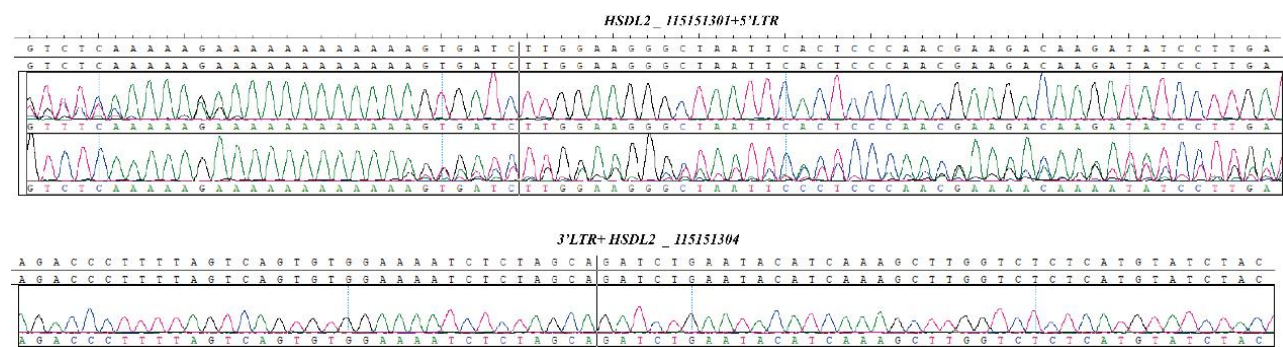


Figure 3. Sanger sequencing result of HSDL2.

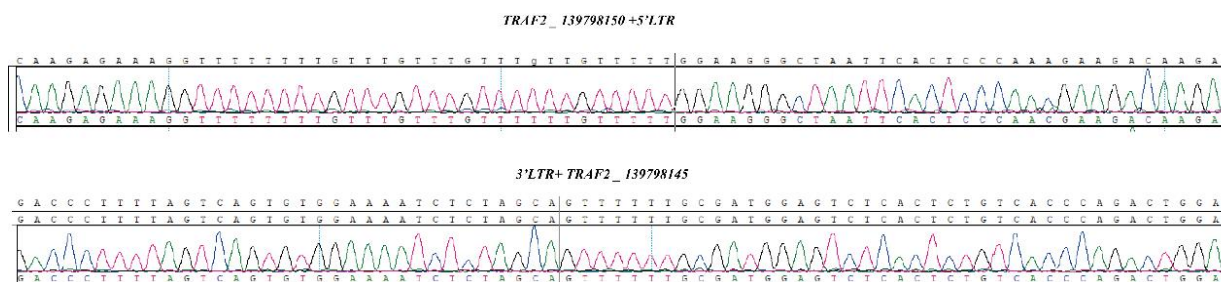


Figure 4. Sanger sequencing result of TRAF2.

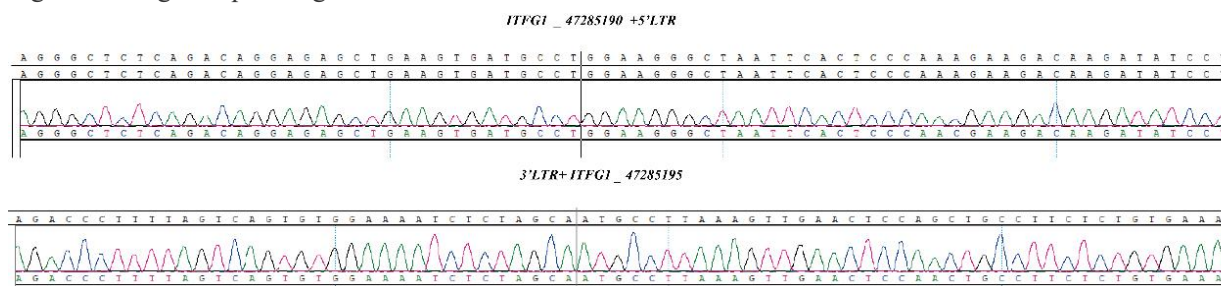


Figure 5. Sanger sequencing result of ITFG1.

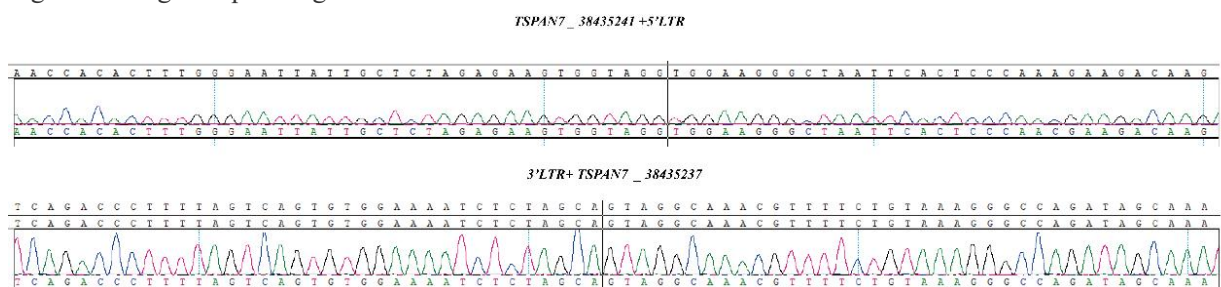


Figure 6. Sanger sequencing result of TSPAN7.