



# Lentiviral Vector Integration Site Reference Standard

CBPL0002

## I. Description

This product can be used for the safety assessment of gene editing cell therapy methods (including CART therapy). The product has been double-verified by NGS (capture method) and Sanger sequencing, indicating that it is suitable as a qualitative reference reagent for LV integration site analysis. The product can reliably detect the following 6 sites with an integration frequency of 50%.

## II. General information

Name	Lentiviral Vector Integration Site Reference Standard
Cat. No.	CBPL0002
Format	Genomic DNA
Size	1ug
Storage Conditions	2~8°C
Expiry	36 months from the date of manufacture

## III.Integration sites(hg19)

Chromosome	Start (approx)	Gene	Integration frequency
3	4871944	ITPR1	50%
4	288630	ZNF732	50%
9	130845722	SLC25A25	50%
9	33997906	UBAP2	50%
17	18494286	CCDC144B	50%
22	50808061	PPP6R2	50%

## IV. Representative Data

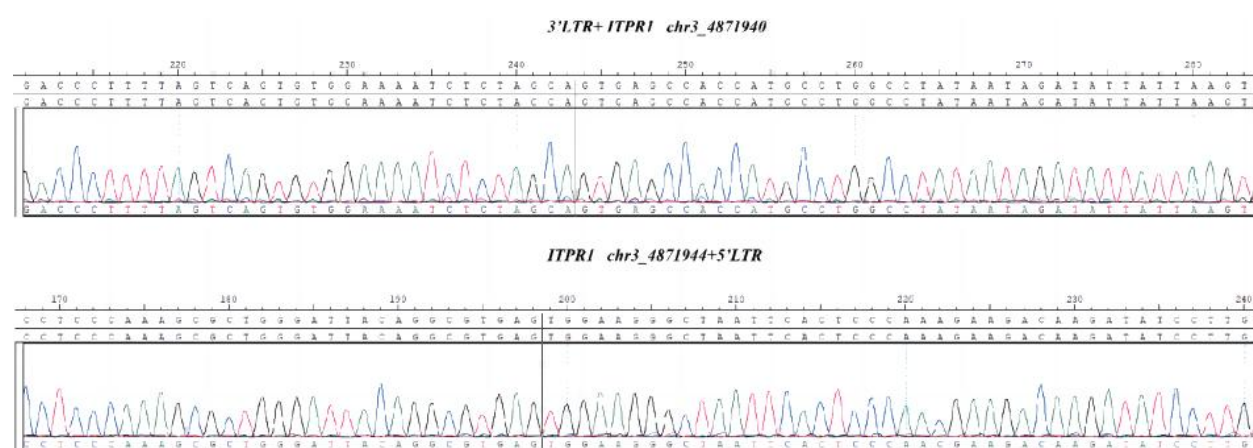


Figure 1. Sanger sequencing result of ITPR1.

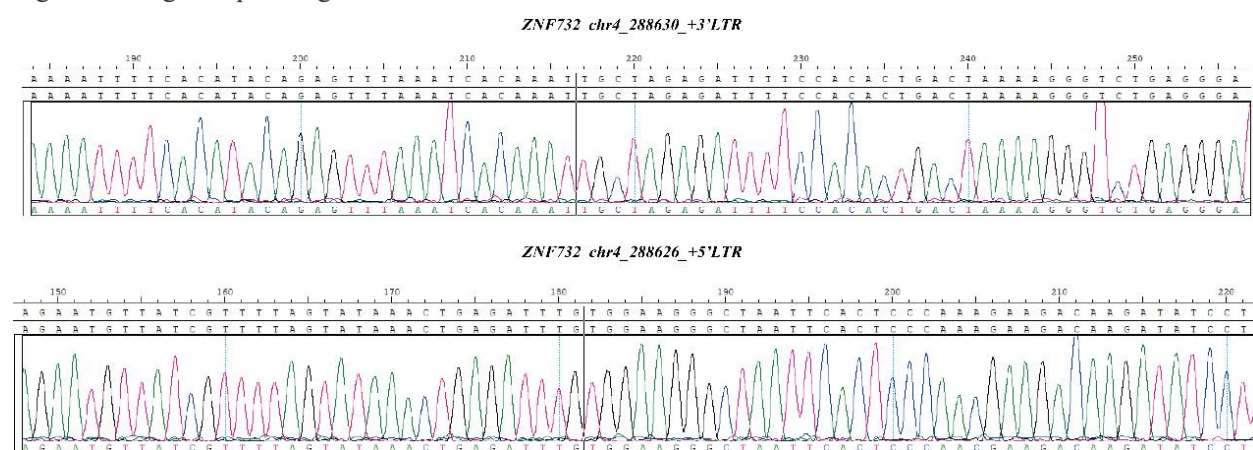


Figure 2. Sanger sequencing result of ZNF732.

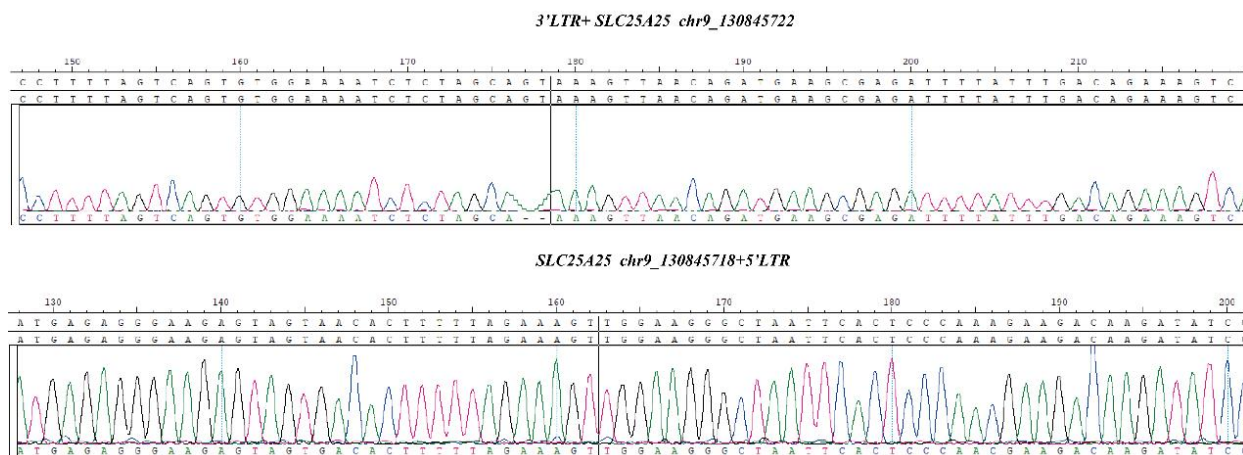


Figure 3. Sanger sequencing result of SLC25A25.

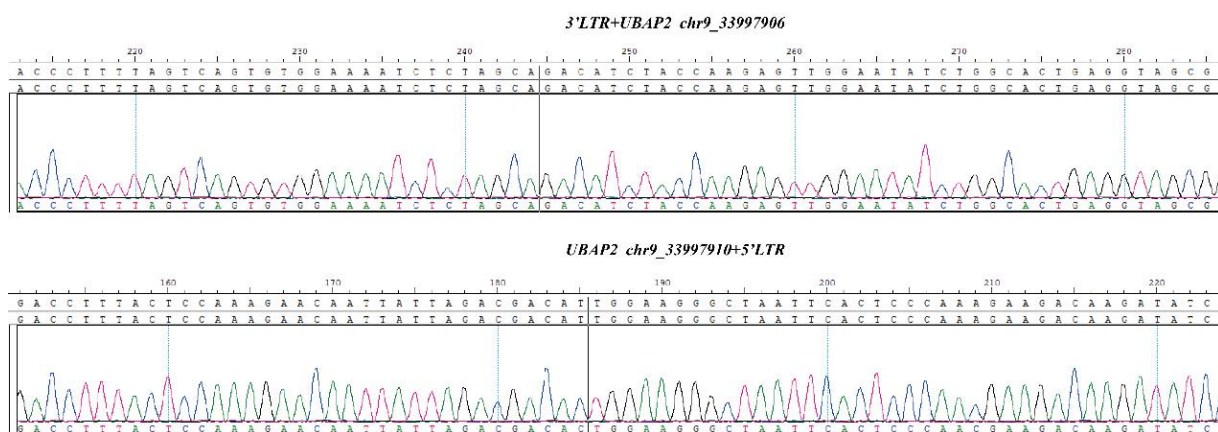


Figure 4. Sanger sequencing result of UBAP2.

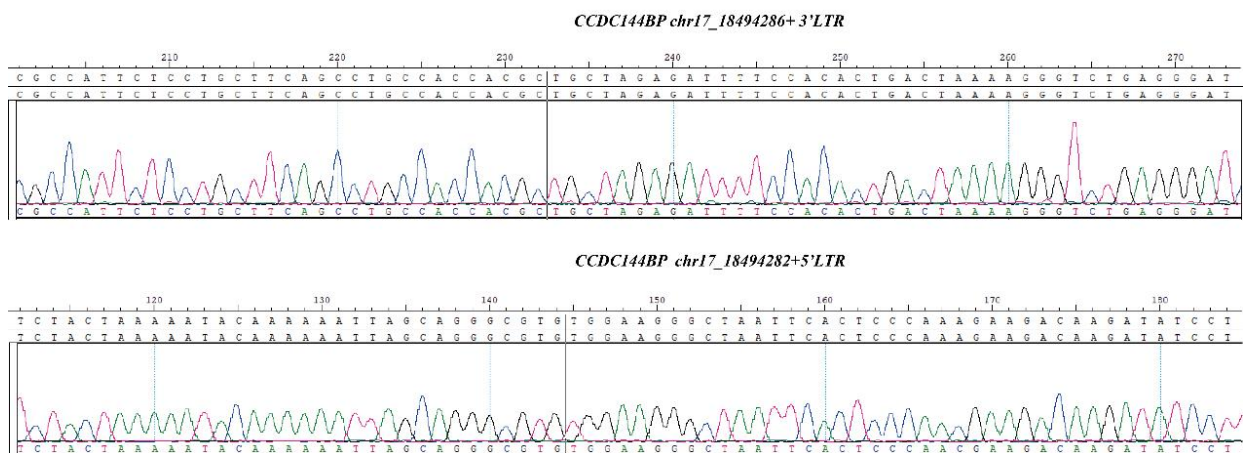


Figure 5. Sanger sequencing result of CCDC144BP.

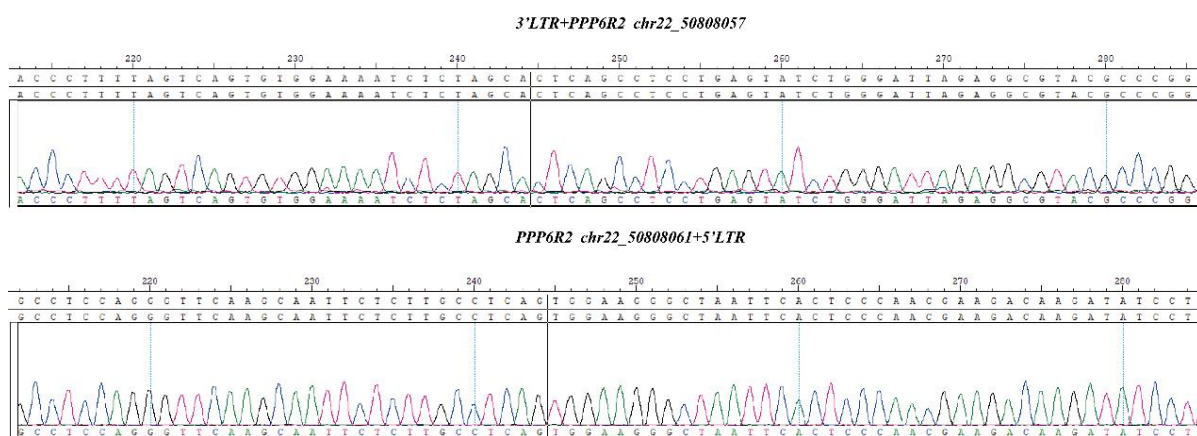


Figure 6. Sanger sequencing result of PPP6R2.